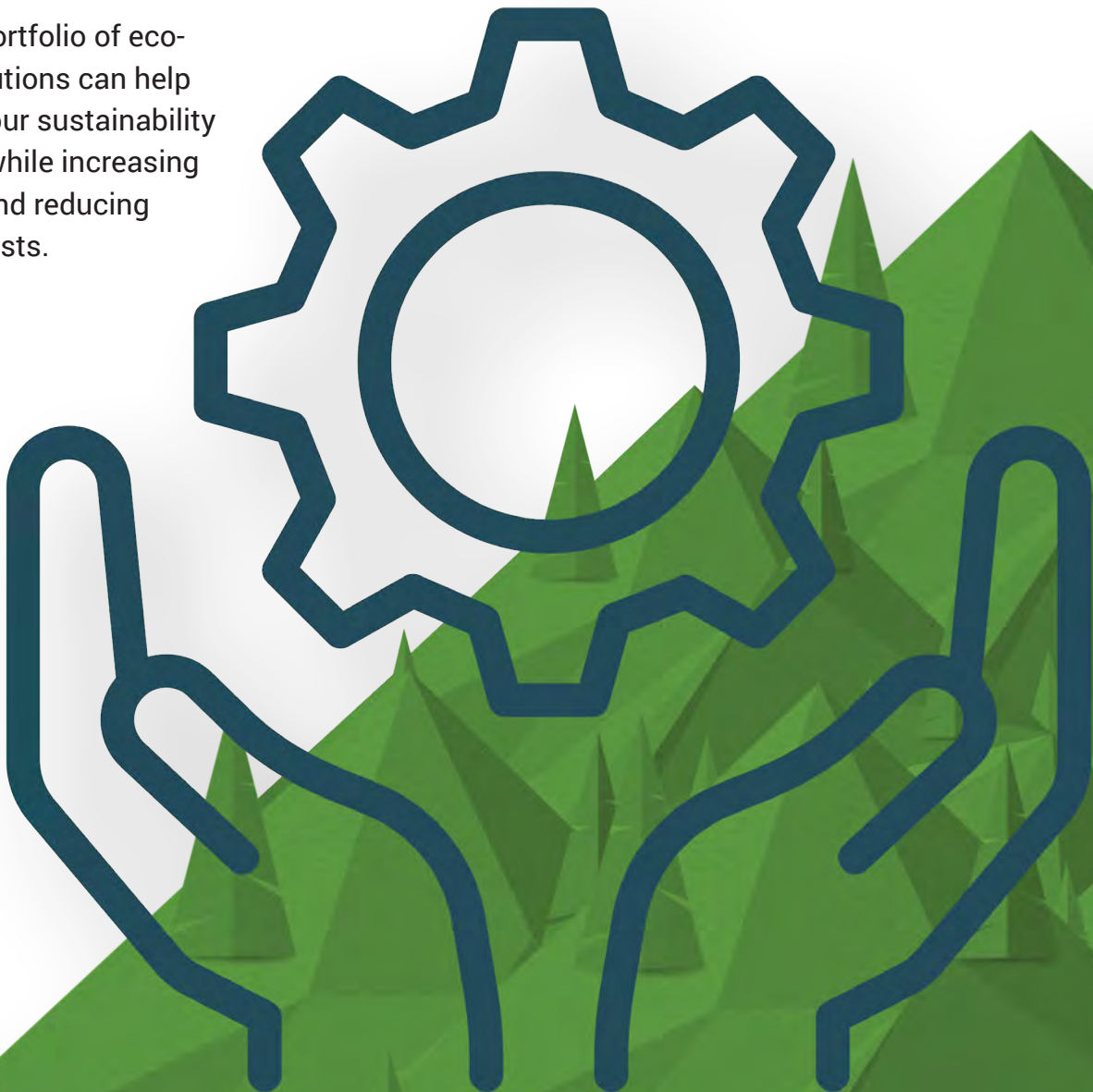


TOSHIBA



EMPOWERING THE ART OF GOING GREEN

Toshiba's portfolio of eco-friendly solutions can help you meet your sustainability objectives while increasing efficiency and reducing business costs.



TOSHIBA

REDUCE. THE TREES WILL THANK YOU.

One of the easiest places to start reducing your eco impact – while saving money – is with printing. Toshiba will collaborate with you to identify a solution that will best enable your business to print smarter, safer, leaner and greener.

MORE ADVANCES IN PRINTING SOLUTIONS.

Our waste-reducing print software solutions let you manage printing across your entire fleet and improve print efficiency with solutions like secure print release, where pages are “released” by end-user authentication, reducing waste by eliminating abandoned print pile up, saving both paper and toner. We offer an energy manager application that controls and manages the energy settings on your entire fleet of printers as well as PCs and servers. In addition, it optimizes energy consumption during non-peak hours to take full advantage of energy savings.

THE SMALLER THE FOOTPRINT, THE LARGER THE SAVINGS.

While others may be talking green, at Toshiba, we’ve been busy developing programs to help businesses like yours reduce, reuse and recycle. Whether it’s turning used toner cartridges into park benches or manufacturing the world’s first Eco MFP, Toshiba is an environmental leader. We have the tools and know-how to help you meet your eco-friendly objectives. And it’s easy to get started. Our experts will perform a free analysis of your organization’s environmental footprint and then provide solutions that will help you increase your green efficiency while saving money.

TOSHIBA’S ENCOMPASS GREEN REPORT.

Toshiba’s Encompass Green Report provides clear, fact-based measurements of your office printing environmental footprint including energy consumption, carbon emission, paper usage and cartridges. It provides an easy comparison of current and future printing sustainability, reductions and savings. Toshiba’s Encompass Green Report also estimates your annual environmental impact in terms of number of trees consumed, waste water produced, paper and cartridge solid waste generated.



Toshiba will show you the many ways your business can run more economically and eco-friendly.

REUSE. RECYCLE. WHAT GOES AROUND COMES AROUND.

What began as turning in used soda bottles for a few extra cents has turned into worldwide recycling efforts, with everything from old tires to new grocery bags. Toshiba carefully considers each material used for every part and what methods we use to manufacture them.

- MEASURE YOUR ENVIRONMENTAL FOOTPRINT
- LEARN THE VALUE OF GREEN SAVINGS
- HAVE A POSITIVE IMPACT IN THE ENVIRONMENT

WHAT TO MAKE OF ALL THE WASTE

At Toshiba, we use advanced processing in order to keep certain materials separate for recycling purposes while eliminating the use of others altogether. Shipping crates and pallets are made with 100% recycled cardboard. Toner cartridges can be recycled with zero waste to landfill as part of Toshiba's EcoSmart Toner Recycling Program. This allows for 100% recycling of Toshiba consumable supplies such as cartridges, drum units and toner bottles. Products that were once considered unusable are now being made into eLumber for the construction of park benches and other outdoor furniture and structures.

WE'VE WORKED HARD TO MAKE IT EASIER FOR ALL OF US TO GO GREEN.

Together with several other manufacturers, Toshiba formed Electronic Manufacturers Recycling Management to provide convenient ways to recycle consumer electronics goods. In addition to that, we have partnered with SIMS Recycling Solutions, to offer customers a means to recycle any copier, printer, MFP, fax machine, computer, tablet and television. We realize that short-term productivity must support long-term sustainability, for our business as well as yours. Many of our products are RoHS Compliant and EPEAT Gold Registered in the global registry for greener electronics. Through the responsible collection, treatment, recycling and recovery of the products we build, Toshiba is also WEEE compliant.



THE PATH TO A SMALLER CARBON FOOTPRINT.

We've put together an entire program to help both our business and yours reduce, reuse and recycle. It's simple, of course. That way, everyone is more likely to participate. So, let us help you become the most sustainable you can.



ENCOMPASS ECOSMART EVALUATION

We'll come out and evaluate your current power usage, entire printer fleet, document management procedures and recycling efforts. Then we'll show you how you can reduce your carbon footprint.



GREENER MANUFACTURING

Toshiba employs strict Green Procurement Guidelines. The guidelines are geared toward creating "Environmentally conscious products". The entire process decreases the negative environmental impacts at each stage of the products life; selection of raw materials, manufacturing process, circulation, consumption, and end of life/recycling.



GREENER PRODUCTS

Most e-STUDIO models Typical Electrical Consumption, or TEC value is exceptionally low, equating to an environmentally friendly product with a low operating cost. Printing is duplex by default and includes an omit blank page function, while our Super-Sleep Mode uses only 1 watt of power. In addition, the e-STUDIO4508LP uses erasable toner so you can reuse the paper again and again.



GREENER PRINTING

Save money on printing costs while saving the environment. Eco-friendly print solutions and an energy management application allow you to manage printing across your entire fleet, improve print efficiency and optimize energy consumption.



ENVIRONMENTAL PROGRAMS

Toshiba offers its customers the Toshiba EcoSmart Recycling program. That means you can recycle used Toshiba cartridges and zero waste goes into landfills. Better yet, it goes into making waterproof, insect-proof eLumber. We provide the collection boxes, you discard the waste, and schedule a pickup. And we have partnered with PrintReleaf, where clients can offset the effects of their printing by having trees replanted in a reforestation project of their choice.

Let Toshiba show you how to help the environment and your bottom line.

business.toshiba.com